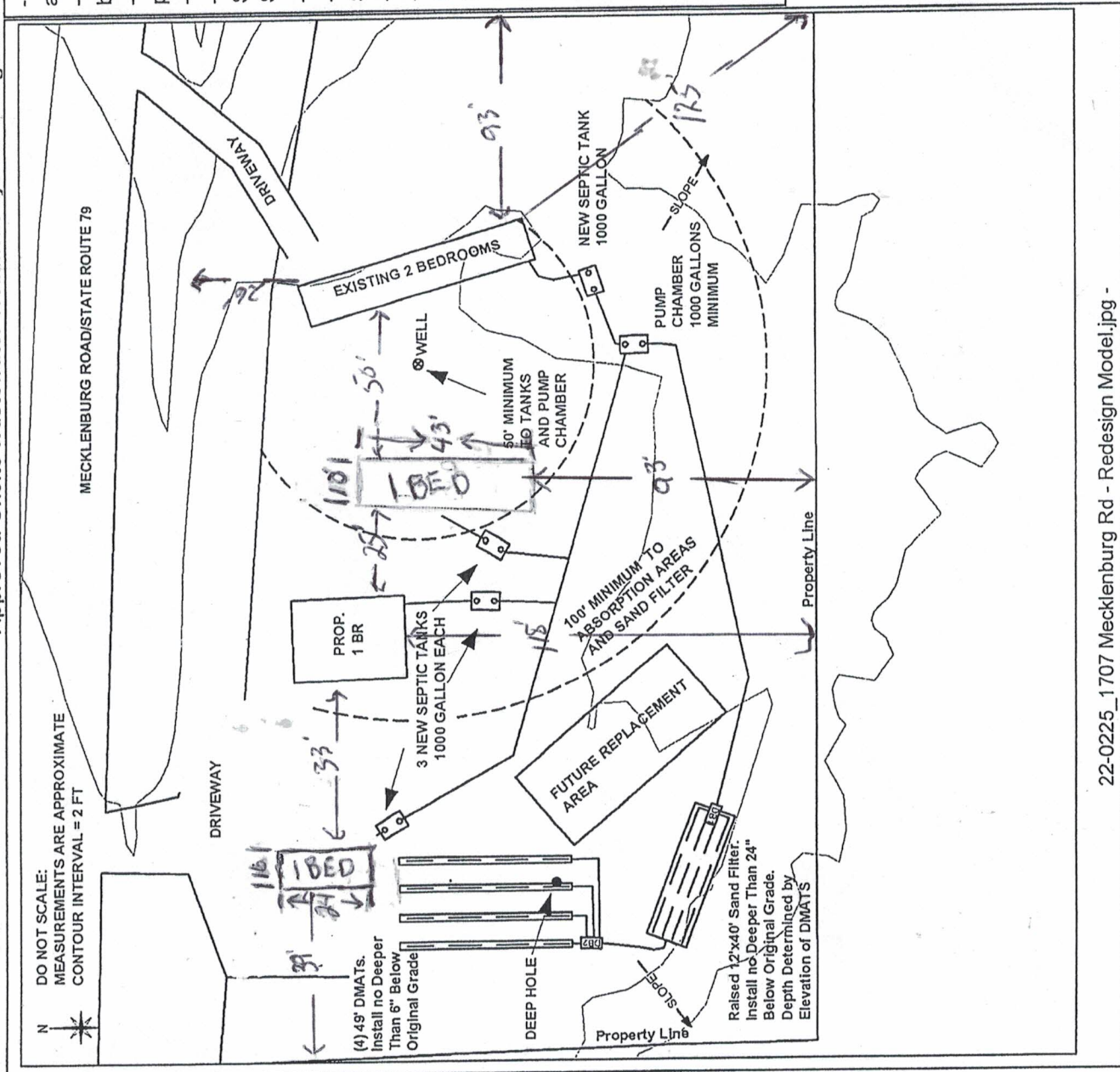


- This and ir  
 - The befor  
 - If an  
 - prior i  
 - Con  
 - Ref  
 - Sepa  
 - Septi  
 - Ref  
 - Ref  
 - Sand  
 - Ref  
 - Exis  
 - haulte  
 - filling  
 - Cor  
 - sand  
 - Ber  
 - sides  
 - Ma  
 - time  
 - Sto  
 - remc  
 - of th  
 - Us  
 - (ATs



22-0225\_1707 Mecklenburg Rd - Redesign Model.jpg -

Additional required construction and material specifications are available at <https://www.tompkinscounty.gov/>  
 Contact the Environmental Health office at (607) 274-6688 for further as: